

GETAWAY 6-STAR STYLE

Welcome aboard the Riviera 6000 Sport Yacht Platinum Edition



“ Creating the Platinum Edition was a rare opportunity to introduce more luxury, style and truly inspired design; a challenge our acclaimed design team has relished.”

Rodney Longhurst - Owner Riviera









A spectacular design

Riviera sport yachts are spectacular. They are designed to make an impression at first sight. By any measure, the Riviera 6000 Sport Yacht Platinum Edition is an exquisite example of the form.

An exterior colour palette of silver grey, black and white conspires to bring artful lines into sharp relief. As befits a flagship, it exudes elegance and power; as if bursting to break free from the marina into open water.

Topping it all off, the Riviera Platinum Silver hardtop and targa meld with the enormous black wraparound windshield, rakish black boot stripe and recessed black hull windows to lend an air of sophisticated mystery.

Where will your next adventure take you? Who knows. But all eyes are certain to be upon you.





A 6000-star experience

The new Riviera 6000 Sport Yacht Platinum Edition combines stunning design lines with lavish, resort-like onboard luxury, all propelled by the world's simplest to operate, most advanced performance system. She is breathtaking to look at. Magnificent to skipper. And poetry in motion.

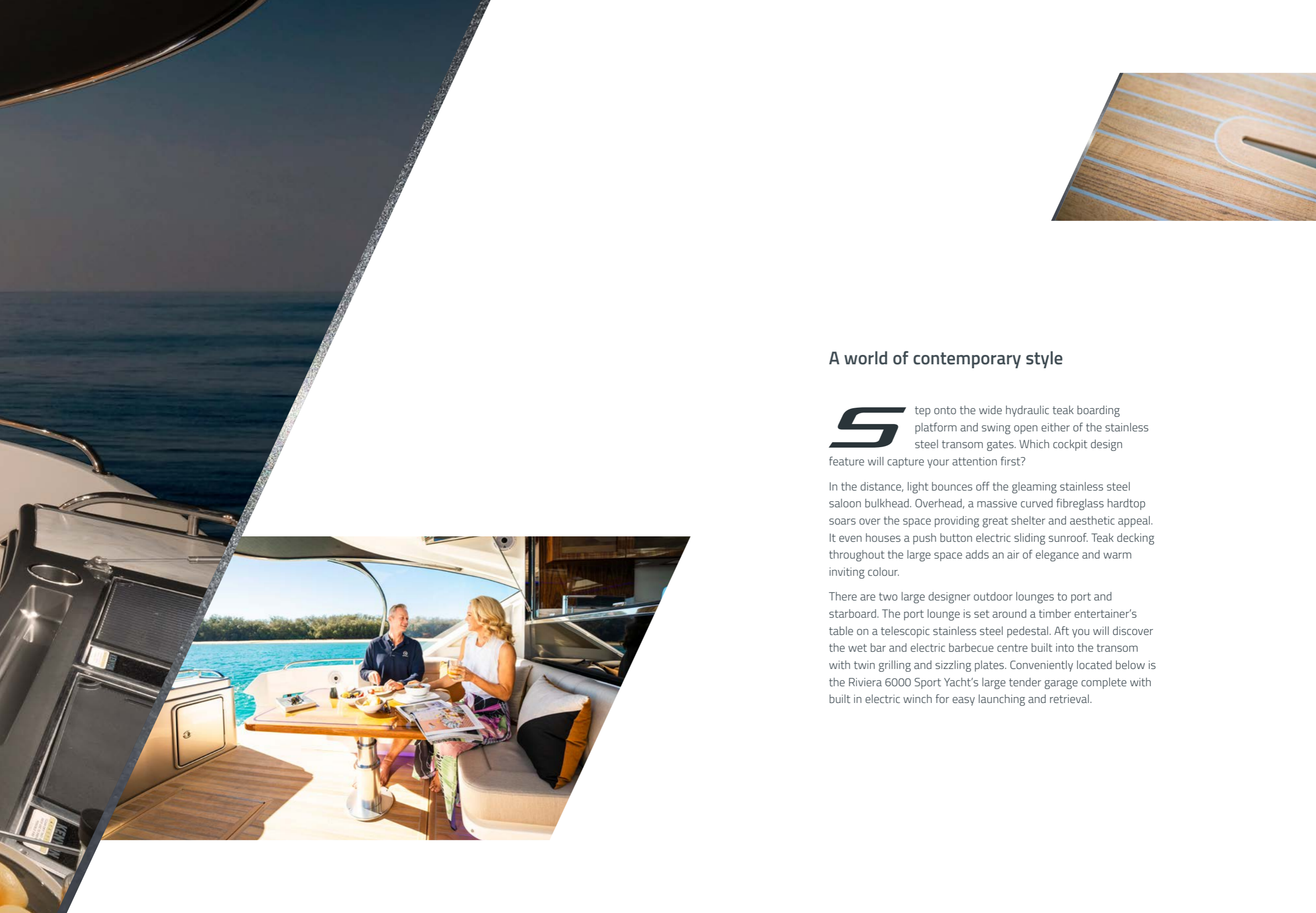
Everything about this luxury motor yacht is creatively and meticulously designed to impress. Bow to stern, above and below deck, she shines with superb handcrafted touches. Design features that inspire the imagination. With an overwhelming sense of light, space and luxury wherever you look.

Above decks there is the easy living, flowing indoor-outdoor floor plan which Riviera has made its own. Below, you'll discover magnificent staterooms and bathrooms to pamper family and guests. Then there is the Volvo Penta Inboard Performance System (IPS) just waiting for you to turn on the ignition and take command.









A world of contemporary style

Step onto the wide hydraulic teak boarding platform and swing open either of the stainless steel transom gates. Which cockpit design feature will capture your attention first?

In the distance, light bounces off the gleaming stainless steel saloon bulkhead. Overhead, a massive curved fibreglass hardtop soars over the space providing great shelter and aesthetic appeal. It even houses a push button electric sliding sunroof. Teak decking throughout the large space adds an air of elegance and warm inviting colour.

There are two large designer outdoor lounges to port and starboard. The port lounge is set around a timber entertainer's table on a telescopic stainless steel pedestal. Aft you will discover the wet bar and electric barbecue centre built into the transom with twin grilling and sizzling plates. Conveniently located below is the Riviera 6000 Sport Yacht's large tender garage complete with built in electric winch for easy launching and retrieval.



A private sanctuary

The foredeck is the perfect place to escape to. You, your passengers and your pets will get here confidently, thanks to wide non-skid side decks, handrails, a high bowrail and raised bulwarks.

Up here the bowrail and all exterior fastenings are fashioned from highly polished, 316-grade stainless steel. Deep foredeck lockers conceal a range of equipment where you need it. For sun lovers, a luxuriously comfortable sun pad covers the foredeck's entire centreline.

To help you chill out, switch on the AM/FM stereo with bluetooth and USB port, then reach out for the deep icebox close at hand.









Tasty galley design

When function and form work together, great design shines. The saloon galley of the 6000 Sport Yacht Platinum Edition is a prime example. It is perfectly sited with optimum access to both the cockpit and the saloon. In fact, simply open a large awning window above and slide open the stainless steel framed bulkhead door to transform this area into one flowing, luxurious main entertaining deck space.

The roomy U shaped galley is located off to one side to port. People can move about and mingle at will without interrupting the chef, who remains in the centre of the action. Food and refreshments can easily travel inside or out.

The space itself is a pleasure to work and be in with even more storage, the latest waterfall benchtops, highly polished walnut cabinetry and designer European appliances.



Grand waterfront loungeroom

Here, the size of the flagship 6000 truly delights. Dramatic sweeping, tinted glass windows to port and starboard frame picturebook views.

The scale of this space is only matched by its luxury and superior level of appointments.

Choose between reverse cycle air conditioning or pushing a button to open the crescent-shaped electric sunroof above. Settle into the deeply cushioned, three-seater leather lounge to starboard. Prepare a round of drinks from the nearby cocktail cabinet with its own ice maker and refrigeration drawers.

Over to port, there is another plush, soft C-shaped leather lounge framing a dining table. Richly polished and mounted on twin stainless steel pedestals, the table features a space-creating hi-lo function. After dinner relax in front of the large flatscreen TV with integrated home theatre system, blueray and AM/FM stereo.









Cutting edge command station

Life at the 6000 Sport Yacht helm is inviting. Now, new styling and gleaming black and silver instrumentation combine to make the Platinum Edition even more exciting.

Step forward with confidence. Settle into the plush alcantara and leather captain's chair. If you can drive a luxury modern car you can navigate and skipper this remarkable yacht. The joystick to your left is linked to world-leading twin Volvo Penta IPS diesel engines. You have total operational command and perfect docking maneuverability.

Everything you need to know is displayed on large intuitive, multi-function touch screens in the ergonomic control console. At a glance take in full vessel, steering and propulsion control, all complemented by Volvo Penta Glass Cockpit navigation and engine system monitoring.





Create the layout for your needs

Before you take the wide companionway to the stately accommodation atrium below, you have a choice to make: 'classic' or 'presidential' layout, four stateroom spaces or three. Both layouts promise 6-star luxury and comfort customised to your lifestyle and family needs.

In the classic layout, the space forward can become an additional guest stateroom portside, an L-shaped retreat with entertainment system, or a lower office area or galley. The choice is yours.

Should you decide on the portside stateroom layout, your guests will enjoy adult-sized upper and lower berths (with ample storage beneath), plush pile carpet, cedar-lined hanging locker and LED lighting. Superbly finished timber and high quality cushioned headlining complete their welcome.

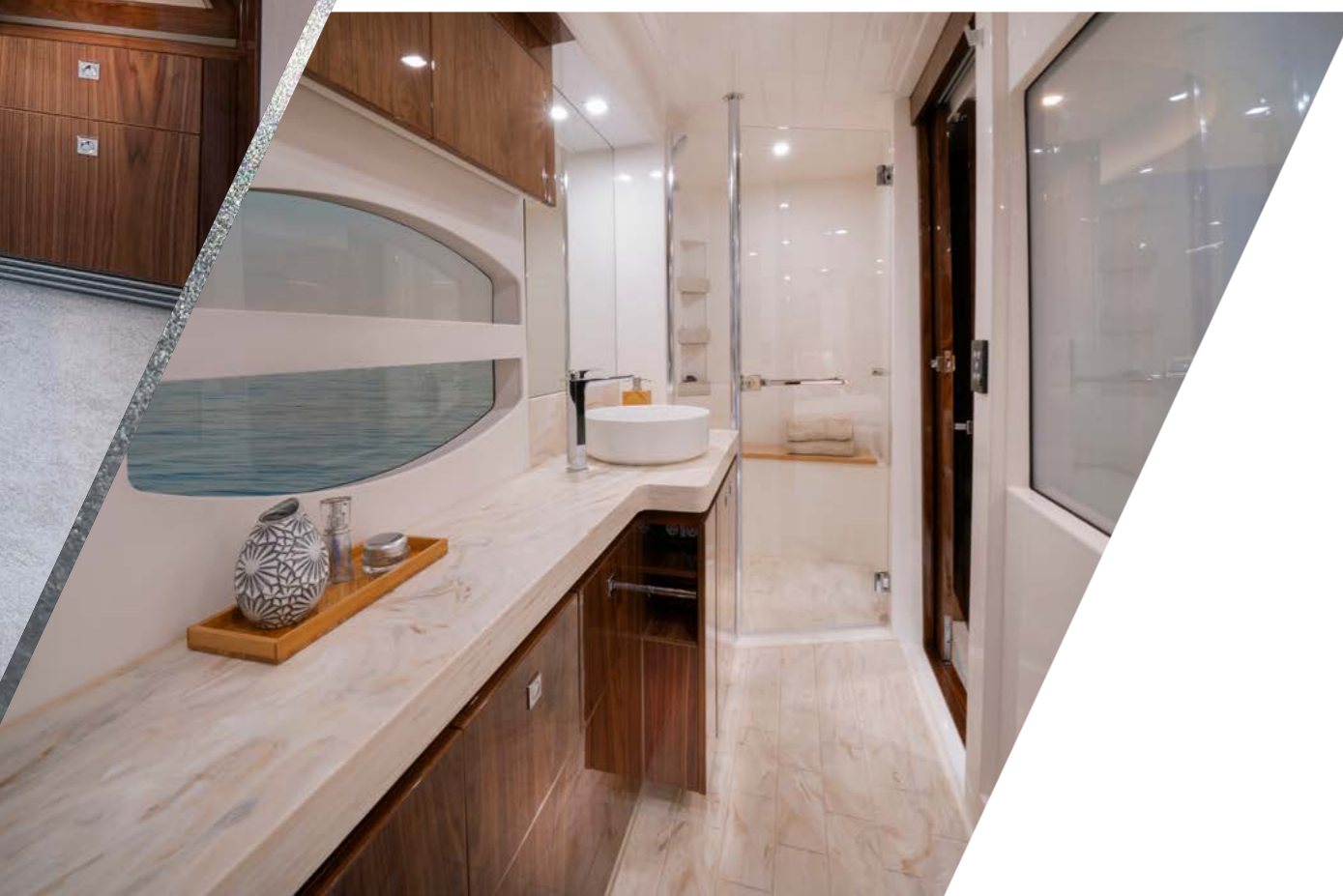


Satin Walnut timber finish









The Classic master

In the 'classic' layout, discover the master stateroom amidships. You'll find it a privilege to be here. Everything has been carefully selected and harmonised to create a mood of rare luxury and calm.

Feel the plush pile carpet at your feet and LED lighting above. Walk around the premium king sized bed with its fabulous feature bedhead and wonder at the space. There are bedside tables to store valuables and a deep walk-in wardrobe with cedar lining to hang your clothes. Forward is a make up bureau with ottoman and to port, a three-seater leather lounge made especially comfortable for the 6000 Platinum Edition.

There is reverse-cycle air conditioning to warm or cool you and a large LED television with integrated home theatre system forward to entertain. The master's special ambience speaks of Riviera handcrafting and attention to detail.

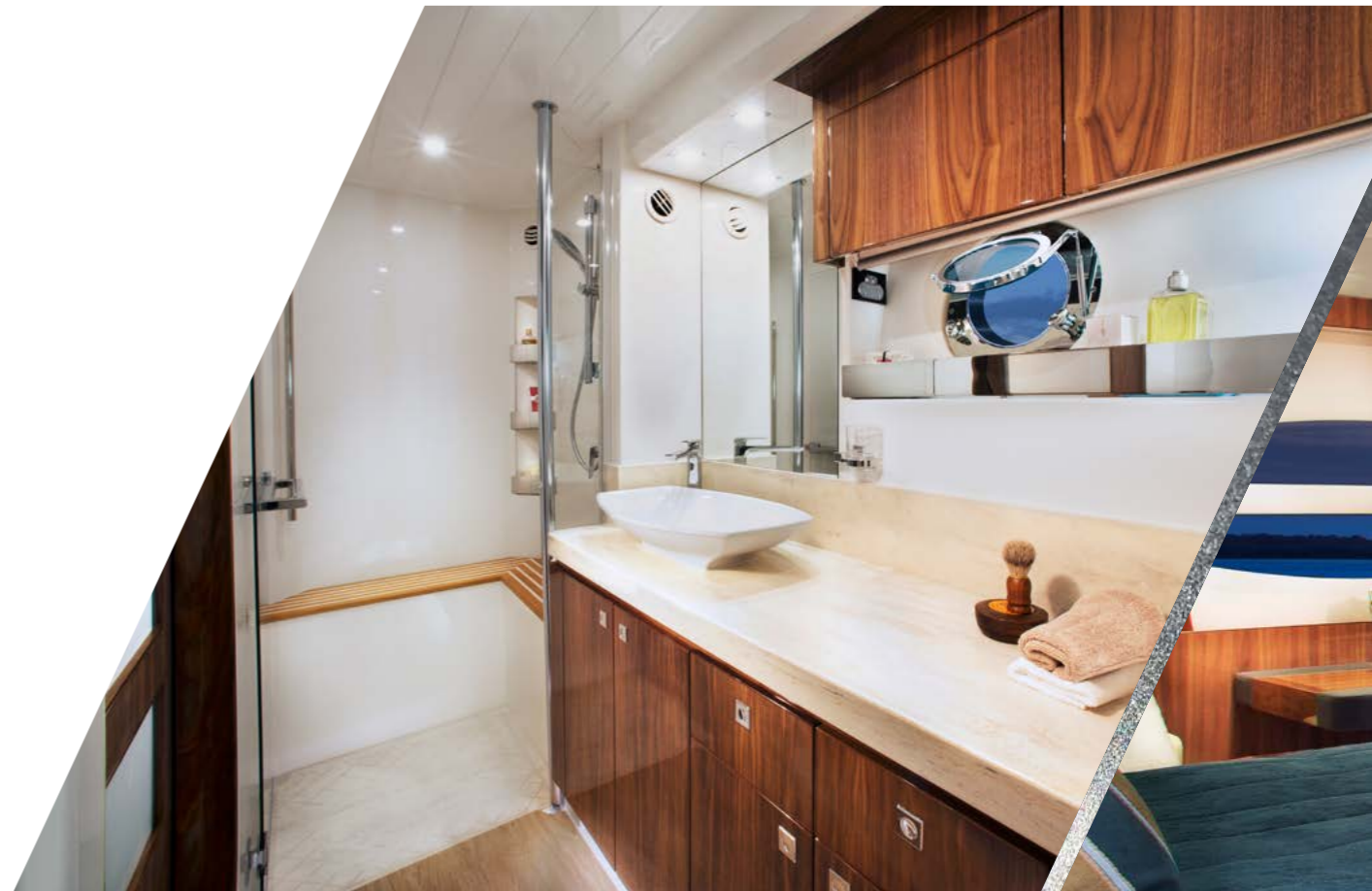


A Presidential decision

In essence the master stateroom configured in the full beam, palatial 'presidential' mode is the stateroom with more. More luxuries, more space, more privacy, more stunning views from the sweeping hull windows to port and starboard and even more refined living. All on a grand scale.

Naturally, it includes all the refinements and handcrafting you see described in the 'classic' master stateroom design that follows. However, in this layout, you gain your own casual dining and sitting area to port, an extra full length hanging wardrobe forward and more storage at the base of the wall mounted television.

Most important of all, you gain a private, beautifully large bathroom positioned forward. Here, luxuriate in appointments such as vanity, benchtop, mirrors, lighting and glass shower recess worthy of the title 'presidential'.










A VIP experience

 nboard guests located in the VIP stateroom - forward in the classic layout - have much to look forward to. As in the master staterooms, Riviera designers have spared no effort to impress.

Your guests will revel in luxury touches throughout including reverse cycle air conditioning, LED mood lighting, a walk-around queen-sized bed with storage beneath, cedar-lined storage locker and soft contemporary fabric choices.

They can switch on their large flatscreen TV with home theatre entertainment system for entertainment. Or gaze out through their hull windows to port and starboard for inspiration. Their fully equipped guest ensuite completes a luxurious Platinum experience.



Luxury accommodation abounds

6 000 Sport Yacht Platinum Edition owners are invariably popular hosts. Fortunately, you've been blessed with plenty of accommodation options.

The starboard guest stateroom is a well designed, welcoming space with direct dayhead access.

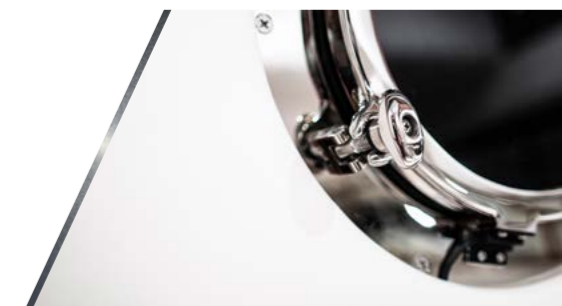
Natural light fills the room from the sweeping hull window. Guests retire to twin adult-sized single beds with innerspring mattresses and generous storage beneath. There is a centre bedside table with drawers for valuables. The impressive Riviera storage cabinetry features positive locking hardware.

Next door the designer ensuite/dayhead with vanity, mirrors, shower and luxury touches reflects the Riviera obsession with excellence.









A special place

Riviera designers have thought of everything down to the smallest details. Consider the versatile utility room, accessed directly from either the cockpit or through the master stateroom's wardrobe. It's ideal the place to store your water toys, diving and recreational gear safely and out of sight.

However, should you wish to maximise your Platinum adventure, exploration and entertainment possibilities, you may decide that adding a crew is in order. In this scenario the utility room can be permanently sealed off from the master then converted into fully self-contained crew quarters. Simple.

That's great Riviera design, in action.

Engineering excellence

Access to the heavy duty coated engine room — with acoustic and thermal insulation and LED lighting — is via a deck hatch from the cockpit or through a watertight door from the versatile utility area. It's here that you will really begin to appreciate the careful consideration for which Riviera is renowned globally in terms of its engine rooms.

The impressive commercial air intake system helps to keep the engine room temperature well below the engine manufacturer's formal recommendation, reducing fuel consumption even further, while the air-conditioning units are mounted high so gravity feeds condensation water into the common drain lines located on either side of the yacht and which drain aft and overboard.

All onboard drains also feed into these common drain lines while the advanced mist elimination system with veins draws moisture from the air and feeds directly overboard.

Four automatic bilge pumps with manual override are located at various points throughout the hull and also pump directly overboard.

There's even a dedicated space for a gyroscopic stabiliser — another example of how Riviera is ready to embrace innovation that makes boating even more enjoyable.





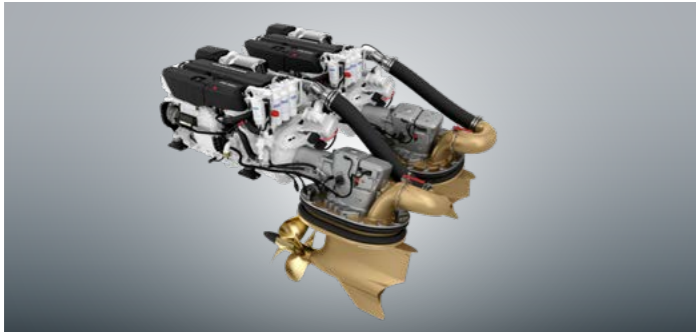
Electrical excellence

All batteries on board the 6000 Sport Yacht Platinum Edition are maintenance-free to ensure carefree boating and are housed in special battery boxes in accordance with American Boating and Yacht Council (ABYC) and the European Union's CE industry standards.

The 6000 has two starting battery banks comprising two batteries per bank for the port and starboard engines. The house battery bank comprises six batteries, and there are two batteries in the auxiliary bank. Individual alternators for each battery bank ensure charging systems are optimised whilst underway and an emergency parallel function provides increased reliability, just in case you are ever faced with a flat start battery bank. All battery banks are isolated at the main battery panel in the utility room.

The house power is 24-volt, which allows for simpler charging, lower current draw and smaller cables (further reduced weight) than equivalent 12-volt systems. The Mastervolt AC-DC inverter (5kW 230V 50HZ/4kW 110V 60HZ) provides power to the icemaker, entertainment systems and all outlets onboard, ensuring watching television while relaxing quietly at anchor is whisper-quiet.

LED lights provide trouble-free boating while reducing electrical current draw. The lamps use less than 10 per cent of the power required to run a halogen lamp — no bulbs means no maintenance and long service life. Additionally, Residual Current Device/Ground Fault Circuit Interrupter (RCD/GFCI) provides protection over the entire yacht and also complies with ABYC and CE standards for safer boating.



The power and technology

Riviera is at the forefront of a marine propulsion revolution, having now launched over 500 pod-driven luxury motor yachts.

Pod-drives are used on such worldly form vessels as the Queen Mary II cruise ship as well as large-scale commercial craft. This proven technology is now revolutionising pleasure yachts.

Offering an excellent power to weight ratio, pod drives deliver exceptional performance, enhanced torque, impressive fuel efficiency, simple maneuverability, low environmental impact and quiet operation thanks to underwater exhausts.

In simplified terms, Volvo Penta's innovative Inboard Propulsion System (IPS) features twin pod drive units, each of which is capable of turning independently to provide the correct thrust to move the yacht in the exact direction required by the skipper easily controlling the system with either a steering wheel and throttles or a joystick.

The 6000 Sport Yacht Platinum Edition has a joystick at the helm and an additional joystick on the portside of her cockpit so a skipper, either solo or with a novice crew, is able to simply push and twist the joystick and the yacht will respond immediately, pivoting in place or tracking sideways into a berth that's just long enough to fit the yacht.

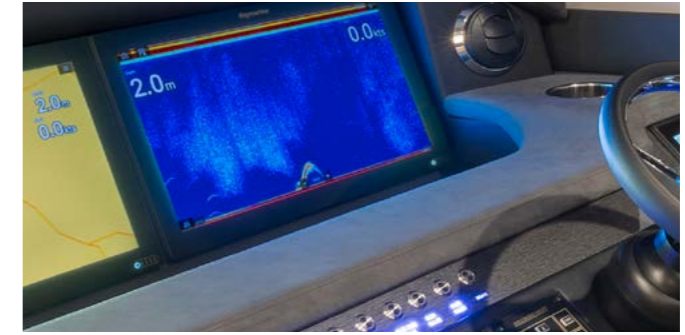
IPS also offers a Dynamic Positioning System (DPS) for station holding while preparing lines and fenders or while waiting off a fuel jetty, the convenience of auto pilot, manual trimming with optional auto trim, as well as a highly efficient Anti Corrosion Protection (ACP) unit mounted to the transom to reduce maintenance of sacrificial anodes.



The three blade nibral, forward facing, counter rotating propellers are protected by the premium antifoul coating PropSpeed to achieve a long service life, as well as 316 marine grade stainless steel line cutters from Volvo Penta, for protection from ropes, fishing lines, plastic bags or nets – these precision made line cutters create a very efficient rotating cutting action without increasing drag or fuel burn.

The 6000 employs the revolutionary Volvo Penta D11-IPS950 propulsion system with twin D11 engines and IPS20 pod-drives (533kW/2x) 725hp). This is a perfectly matched drive package for the 6000 and the system's Class 5 commercial rating assures enhanced reliability even for high-use, high-speed planing commercial vessels.

Additionally, the D11-IPS950 system is fully certified under the Det Norske Veritas and Germanischer Lloyd (DNV GL) classification system.



Window to the future

To give you total command of the 6000 Sport Yacht, Volvo Penta's state-of-the-art Glass Cockpit navigation system blends new technology with dependability and practical functionality.

The Glass Cockpit system provides a very clean, easy-to-use system with enhanced overview and control of both engines and navigation, including GPS, sounder and radar, even auto-pilot and optional charts ... and all in one place and all in one system.

Integrated with the IPS Electronic Vessel Control (EVC) system, the Glass Cockpit gathers all driver information and displays it in one location. The easy-to-handle, pinch-to-zoom displays give you instant control. The ergonomic design and interface for the dashboard offers push-buttons on the controls and touch-buttons on the screens.

Just one clever feature of the Glass Cockpit is the unique Auto Guidance feature that searches through all relevant charts to suggest a route you can safely follow, keeping your preferred distance from shallow water, buoys and other known obstacles.

Coupled with the Auto Pilot, it not only shows the way, it can take you there.



The Riviera advantage

Riviera is continuing to lead the luxury motor yacht market and proudly stands behind the machinery and systems onboard its world-class designs.

A 5-year limited warranty on all Volvo Penta systems is now standard with every new Riviera and covers Volvo Penta helm station electronics, steering and propellers as well as major componentry of their high performance drivelines and fuel-efficient engines.

Available worldwide, this extended warranty compliments the Riviera 5-year structural limited warranty and will provide even greater peace of mind for our valued members of the Riviera boating family.

Riviera Family members also enjoy exclusive invitations to fun-filled social and boating education events, inspiring cruising experiences as well as special offers on genuine parts, electronics and our premium Riviera lifestyle collection.



CZone simplicity

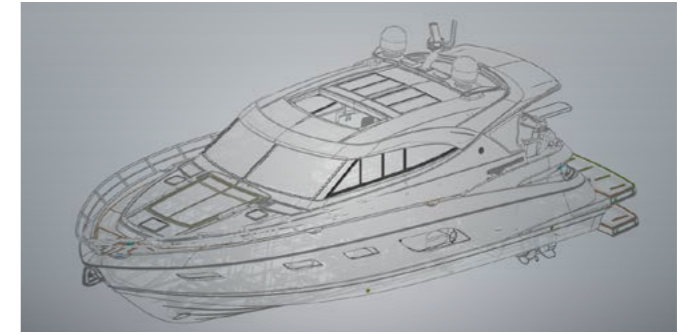
The fully integrated CZone digital switching system enhances the ease of monitoring and operation of the Riviera 6000's onboard systems even further, extending centralised, touch-screen control to lighting, pumps, batteries, entertainment systems and appliances.

CZone allows owners to operate multiple circuits at a single touch, energising all lighting and electrics depending on your requirements. It comes pre-programmed with three Modes — entertaining, cruising and dock unattended — and these modes can be customised.

Other user-friendly features include interior light-dimming, timer controls, automated circuit control, wiper speed and wash functions. There's also a service mode that shuts down all power and systems.

Based on industry-proven Controller Area Network (CAN) technology, the CZone system offers DC and AC switching and over-current protection. Full systems monitoring (with alarms) including AC voltage, current, frequency and kilowatts, DC voltage, current and remaining battery capacity, along with tank levels and indication for systems in operation, is all clearly displayed on the 10-inch touchscreen at the helm and 5-inch colour control screens in the galley and master stateroom.

There's also the option of additional iPad connectivity, so you can control CZone from anywhere onboard your yacht.



Impeccable pedigree

The confident poise of the 6000 Sport Yacht Platinum Edition is just as evident offshore as it is at anchor — her solid and robust hull with keel is the evolution of our rich 39-year history of building over 5,400 world-class luxury motor yachts that are time proven in the often challenging Australian offshore conditions.

Every Riviera built at our world-class facility on Australia's Gold Coast combines superior-strength hand lay-ups with a water-tight collision bulkhead forward and independent compartments throughout the hull.

Our legendary build quality also features vinylester resin in the outer layer of lamination to increase the ability to withstand water absorption. An isophthalic gelcoat exterior provides an impeccable and hard-wearing surface finish.

From the waterline down, the hull is solid GRP with reinforced bottom, keel and chines. Structural core material is used in the hull flanks, main deck and hardtop, while precisely fitted, lightweight resin transfer-moulded small parts have a double-sided gelcoat finish and are pre-fitted for a perfect seal when all major components are bonded together.

Riviera also only uses 316 marine grade stainless steel in all our exterior fastenings. All stainless steel rails feature ground and polished welds to ensure a consistently smooth and mirror finish.

Our designers have placed a firm focus on convenient access to every key maintenance point so any issues can be quickly identified and addressed, and service costs are kept to a minimum.

Riviera 6000 Sport Yacht Platinum Edition



Classic master design



Optional lower lounge design



Optional Presidential design

Specifications

Length Overall <small>(inc. swim platform)</small>	19.30 m	63' 4"
Hull Length (Lh to ISO8666) *	17.60 m	57' 9"
Beam <small>(inc. gunwale)</small>	5.38 m	17' 8"
Maximum Draft <small>(inc. props)</small>	1.45 m	4' 9"
Dry Weight <small>(approx.)</small> **	26,964 kg	59,445 lb
Fuel Capacity ***	3,300 L	872 US gal
Water Capacity ***	800 L	211 US gal
Holding Tank Capacity ***	500 L	132 US gal
Sleeping Capacity	8 - 10 persons	
Cockpit Area	10.60 m ²	114.10 ft ²
Bridge Clearance	5.50 m	18' 1"
Standard Engine Volvo Penta D11-IPS950 x 2	533 kW	725 hp each

*Specifications may vary on a regional basis.

Specification clarification

* Length of the hull (Lh) to ISO8666: Includes all structural and integral parts (ie. the moulded length of the hull). It excludes parts that can be removed in a non-destructive manner without affecting the structural integrity of the craft, (eg. pulpits, outdrives, driving platforms, rubbing strakes).

** Dry weight represents the estimated minimum weight of a yacht with standard engines and options, no fuel or water on board, no equipment or provisions and no personnel. The stated dry weight may be exceeded.

*** Denotes net tank capacity. For useable capacity do not rely on more than 90% of tank capacity. Actual capacity will vary according to yacht trim and sea state. Speeds are subject to normal weather conditions, fuel and/or water levels, passengers and equipment loads.

Our care for your information

Due to the constant refinement of specifications and design by Riviera Australia, the information in this document may change without notice.

Specifications may vary with time and by region.

Some images or illustrations in this brochure may include options or custom details.

Please note that as safety equipment specifications or standards vary by country, this aspect of your purchase will need to be completed by yourself and or your Riviera representative.

Please refer to your Riviera representative for specific warranty cover and the latest detailed list of inclusions and options prior to purchase.

The Reassurance of owning a Riviera

What sets Riviera apart as one of the world's great luxury motor yacht builders?

Is it the devotion to quality, standard of materials used, the ocean-tested structural strength, unsurpassed ease of operation, or the stylish, handcrafted luxury finish? Or perhaps it's the famous culture of care that transforms owners into the 'Riviera family'.

The answer is all of the above, and more. Much, much more. Over 40 years and the building of over 5,600 luxury motor yachts, the 600-strong Riviera team have been on a continuous quest of evolution and refinement.

This remarkable heritage of knowledge matched by innovation allows us to marry the best of the time proven with the exciting and new. Witness our introduction of cutting edge touch screen digital technology and joystick maneuverability, which make navigating and operating a Riviera and Belize luxury motor yacht a relaxed and enjoyable experience.

Located on the Gold Coast, Queensland, our 14-hectare, state-of-the-art manufacturing facility is the largest facility of its kind in the Southern Hemisphere. Here we build on the notable Australian qualities of strength, practicality and love of water in the continent completely surrounded by three oceans and four seas.

Then we test our designs in some of the toughest offshore conditions on earth. Hardly surprising that Riviera luxury motor yachts command impressive resale values worldwide.

Today, you can choose from five individual designs that make up our fabulous collection of luxury motor yachts, the Riviera Flybridge, SUV, Sport Yacht or Sports Motor Yacht models, along with our more traditional Belize Collection. All will withstand virtually anything the elements and you can put them through, with poise and ease.

Naturally, we back this confidence with an industry-leading 5-year structural limited warranty. In addition, with all our Volvo Penta powered yachts, we offer a 5-year limited warranty covering helm station controls and multi-function displays, steering and propellers, plus pod drives and engines.

Life is too short for needless compromise. So when it comes time to invest in your next dream motor yacht, why settle for a lesser option when you can enjoy all that makes up a Riviera.





Crafted with pride, with you in mind

Owner-care at Riviera and Belize is in a class of its own. Premium quality, professional and personal, it is all designed to be of the highest quality, in keeping with the world-class luxury motor yacht we are building specifically for you.

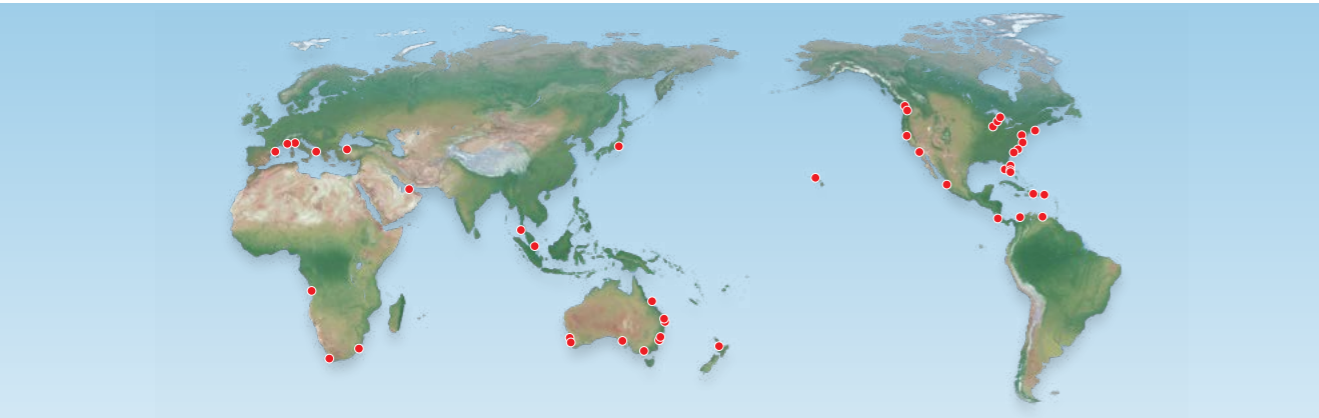
Like thousands of other happy owners, we are confident your every experience of dealing with us and our global representative team - from selecting your favoured options, electronics and decor, through to routine maintenance and repairs - will be conducted with the upmost respect and care.

Our highly skilled team consult and partner with internationally acclaimed naval architects, designers and engineers to ensure we fully embrace the latest, most exciting industry standards and trends.

Constant communication with the worldwide family of Riviera owners also plays a vital part in helping guide and inform our new model development program.

All this pride in performance ensures Riviera will continue to exceed the evolving needs of discerning luxury motor yacht enthusiasts like you.





A global marque of excellence

For nearly four decades the Riviera team have been preoccupied with the relentless pursuit of excellence. That means never being satisfied with the status quo, rather forever looking to improve and refine our knowledge base by embracing the latest technologies and work practices.

All these endeavours by our factory team and international representative network are directed towards creating a superior luxury motor yacht experience for you. They have also garnered us enormous acclaim from the global boating industry along the way.

Over the past four decades Riviera have accumulated an impressive collection of local, national and international awards recognising 'world's best practice' across the fields of education and training, employment, innovative manufacturing techniques, export, quality of workmanship and pioneering design.

More than testimony to our passion for handcrafting superior luxury motor yachts, they are your assurance when you decide to own a Riviera motor yacht.

Electronics and systems

Electronics play an ever-increasing role in maximising the pleasure and safety of luxury motor yachts, and the choice of equipment that is available today is vast.

Selecting the equipment that meets your needs can be a very challenging task — and Riviera's electronics experts are here to assist.

We source the best systems from around the world, we help match technology to individual requirements and work closely with Riviera's international representative network to create systems that maximise your boating pleasure.

Genuine Parts, Decor and Accessories

Our passion for quality and practical design is reflected in our exclusive and growing range of clothing, accessories and décor items created to enhance your time afloat.

If you love your Riviera, you'll feel right at home with the Riviera Collection — an extensive range of casual, stylish, comfortable, practical equipment, clothing and accessories.

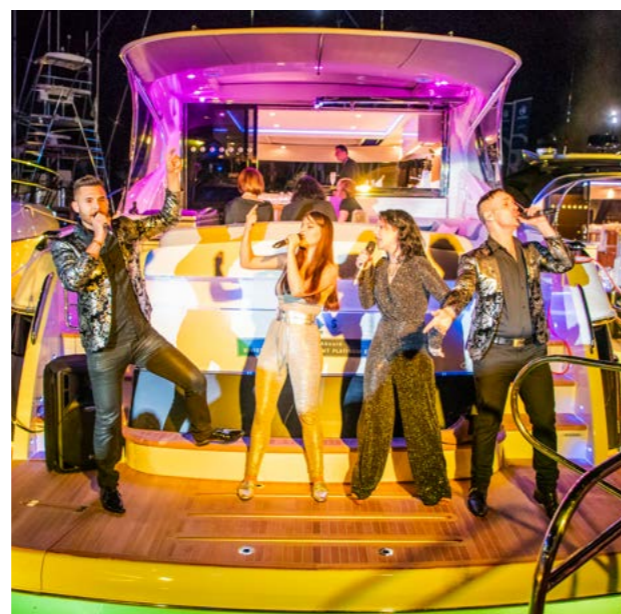
The Accessory and Décor collection ranges from storm jackets to stylish crockery.

To make your Riviera truly your own, we offer a wide range of fabrics, finishes and colour schemes that enable you to personalise your motor yacht.

Of course our experienced design team is always available to advise and assist you with your individual selection.

RivieraParts.com.au





The Riviera and Belize Experience

There's nothing quite like the exhilaration of blue-water cruising in company to remind our valued owners why they are so passionate about the rich and rewarding Riviera luxury life afloat.

For these are the types of passages that build the confidence and skills for people to use their yachts to their full potential, that create the very special memories that last a lifetime, and, importantly, are often the catalyst for long-lasting friendships.

Together, members of our growing global family of Riviera and Belize owners enjoy many special cruising experiences to idyllic destinations around the world — safe in the knowledge that experienced skippers and engineers are always close at hand.

We invite you to join with us for these special experiences — either to stretch your sea legs and gain offshore cruising confidence, or to simply enjoy the company of like-minded people who share an appreciation for the truly unique Riviera life.

