



RIVIERA
LUXURY MOTOR YACHTS



*Essentially a super yacht in design and amenity.
With a range of over 1,000 nautical miles and serene at 30 knots.*

A new era for Riviera begins...



WORLD PREMIERE 2022 - RIVIERA 78

MOTOR YACHT



RIVIERA

THE RIVIERA 78 MOTOR YACHT

A proud new era of space, luxury and performance begins

Riviera has long been synonymous with blue-water performance, luxury and versatility. Our worldwide family of now over 5,700 Riviera owners has provided valuable observations that have assisted in the creation of 22 distinct models across five individual luxury motor yacht collections: Sports Motor Yacht, SUV, Open & Enclosed Flybridge, Sport Yacht and Belize. Each Riviera model reflecting a different expression of 'the ultimate boating experience.'

Now a new era begins. The Riviera design group in collaboration with award-winning superyacht designer, Luca Vallebona, have created the 78 Motor Yacht, an entirely new Riviera. With more space and more luxury as well as the key attributes of every Riviera: quality, strength and performance. Hence, the Riviera 78 is an ocean capable luxury motor yacht, equally comfortable entertaining on Sydney Harbour, cruising the Mediterranean, or relaxing with the family on holiday in the Bahamas.

*“On behalf of the 700-strong Riviera team, I am proud to introduce
this very special, Riviera 78 Motor Yacht, crafted in Australia to
Riviera’s exacting standards”*

Rodney Longhurst - Owner Riviera





PERSONALISE YOUR 78 MOTOR YACHT

An array of design options and bespoke interiors

Every Riviera owner is different and no two 78 Motor Yachts will be the same. You may prefer an enclosed flybridge or an open daybridge design. Choosing a daybridge means a dual helm and a foredeck sans davit, with the tender securely cradled on the hydraulic boarding platform. You may want a crew cabin or prefer to have a dedicated laundry or utility room - the choice is yours.

A variety of foredeck entertainment layouts are available and inside there's an array of interior packages to inspire. Or partner with our Riviera design team and create a bespoke interior including your own selection of premium furniture, high-end fabrics and leathers from our extensive ranges.

Imagine entertaining friends and family at anchor in one of the great waterways of the world, aboard this brilliant new Riviera flagship – a magnificent yacht that is uniquely you.

WELCOME ABOARD

A magnificent new luxury motor yacht

As you step aboard the large boarding platform you'll notice teak steps port and starboard leading up to the aft deck. In between is the watersports garage and to starboard, an access door slides out for entry to the engine room and access through to the crew or utility room.

Notice the very clever boarding platform that articulates an hydraulic swim platform into steps that can be lowered below the water or raised above to match the level of marina or pontoon. And for raised fixed jetties there are wing doors on the aft deck for easy, direct access.





A FOREDECK

Made for fun, entertaining and practicality

Riviera's 78 Motor Yacht has so many separate entertaining areas that family groups, friends and couples can all find their own space to enjoy the world around them. The foredeck is one such retreat. Follow the wide side decks with raised coamings illuminated at night in soft blue LED light, designed to make movements aboard confident.

At anchor the foredeck becomes a U-shaped relaxation lounge complete with generous ice boxes and a dedicated sound system for the times when you want to enjoy the panoramic views. Or choose the sunbed option and relax with a good book and a sea breeze under a perfect stow-away awning. For long range cruising, you can option an hydraulic davit and carry your tender or a jet ski securely.



SUPER SPACIOUS

Aft deck

The sheer size of the aft deck gives you that super yacht feeling. And in essence that is the design philosophy of Riviera's 78 Motor Yacht – to create the features and amenity of a mini-superyacht. The aft deck comfortably seats eight around a superbly crafted folding teak table with forward facing lounge and occasional chairs. You'll find everything you need for relaxed entertaining including a wet bar with fridge, icemaker, sink and double barbecue station. High-end sound system and TV complete the essentials.

At the push of a button the aft deck opens up the saloon and galley with the electric saloon door sliding open and the galley window disappearing down. Both these are tinted glass framed in stainless steel. Then the bar with optional swing out stools becomes an extension of the galley and the aft deck flows into the saloon creating a grand living space. For those times when the ambient weather is simply too cold or too hot, the aft deck can be quickly enclosed and fully airconditioned as an option.







PERSONAL SALOON

Make your 78 Motor Yacht yours

As you enter the saloon, opposite the galley are two sets of stairs. Ascend the timber steps to the flybridge or take the stairs below to the crew cabin or utility room. In the principal design, there's a lounge dining area forward with a folding timber table and an L-shaped lounge with ottoman to starboard.

In keeping with the bespoke philosophy, Riviera's design team has selected premium furniture to provide owners with the opportunity to personalise the saloon to their personal requirements and taste. The large tinted windows are a feature and in true motor yacht style the saloon features a space-saving starboard door giving you quick, easy access to the side and foredeck. You may select a folding table with seating for eight, or elect to make this your lounge and cinema area, keeping dinning to the aft deck.

Forward to port is a wet bar with fridge, wine cooler and sink. A superior sound system is always ready to get the party started. Lower the electric window blinds and the saloon becomes a cinema room at the press of a button with a large TV hinging down from the headliner. This locks into place above the leather-wrapped hand rail of the forward stairs curving down to the accommodation deck. Simply brilliant.



AFT GALLEY

Designed to inspire

This is a galley to behold and admire. Premium appliances in handcrafted Riviera joinery of varnished exotic timbers. Two full-sized fridges with double freezer drawers underneath. Twin Miele combination ovens and a Miele four-element induction cooktop.

Enjoy the convenience of a one-and-a-half bowl sink with insinkerator and integrated Zip system that delivers hot, cold, soda and boiling water. Ample storage, solid surface benchtops, rangehood, and a dishwasher draw unit complete the picture of a designer kitchen – an inspired space to enjoy preparing meals and socializing.







THE COMFORT

Of a fully enclosed flybridge

While some may prefer the open flybridge design, the fully enclosed option effectively gives you another all-weather entertaining space with additional accommodation. There's an L-shaped lounge in your choice of leather or fabric with a slide-out bed and storage. A starboard side cabinet of handcrafted timber holds a wine cooler complemented portside by a wet bar, sink and fridge.

The flybridge is air conditioned of course, however there are those days where you'll prefer to open the sunroof and drop down the electric side windows for a cool sea breeze. Perfect for a party, the flybridge has its own high-end sound system and TV.

TRIPLE HELM

A flybridge with electric sunroof

The Riviera 78 Motor Yacht has the ultimate flybridge for extended voyages. And the triple helm design is also perfect for a day's cruising or your extended adventure. It seems everyone wants the best vantage point when underway and that will always be at the helm.

The curved tempered glass windscreen provides outstanding visibility and the deeply comfortable hand-stitched leather creates a mood of pure luxury. An ultra-modern command capsule, the helm station is brimming with touchscreen technology, all fingertip control, all designed to make your boating even easier and more enjoyable.

The 78 Motor Yacht is shaft-driven with power provided by a choice of highly spirited twin MAN V12 engines. Cruise at a stately 12 knots or if the forecast changes you can rely on Riviera's legendary blue-water performance to sprint home at 26 to 30 knots.



FLYBRIDGE ALFRESCO *AFT DECK*

Electric twin tinted glass doors slide open to extend the flybridge out to an alfresco aft deck. Here you'll enjoy a U-shaped lounge to starboard with a handcrafted timber table. Simply lower the table and add an infill cushion to create the perfect daybed. Snacks and drinks are catered via a wet bar portside with fridge, icemaker, sink and bar stools.

The upper aft deck is so spacious there is ample room for a couple of lounge chairs - so sit back with a cool drink and enjoy the view. • And you'll appreciate a discreet day head to starboard. The aft deck also provides excellent visibility for docking with joystick controls port and starboard.







INNOVATIVE

Design features

Wireless mobile device chargers are built into cabinetry throughout the 78 Motor Yacht with stations in the saloon, flybridge and master stateroom. Tablet controlled entertainment systems on each level. Humphree Fin Stabilization system standard inclusion. Digital fuel gauges at deck fillers to prevent overfilling. Single-glance control with cameras to saloon, bow anchor, aft deck and engine room with direct feed to helm navigation screens.





FOUR STATEROOMS, THREE BATHROOMS

Luxury accommodation

Forward of the saloon, a curved stairway leads down to the accommodation deck. This void creates a beautifully designed atrium, filled with natural light from the vast glass windscreen of the saloon. Timeless contemporary interior design is reflected throughout the Riviera 78 Motor Yacht. Every detail has been considered to meet the highest standard and the finest quality materials have been used.

Handcrafted teak joinery is grain matched. TV's are flush mounted. Superior fabrics and ultra-leathers are utilised extensively. The aesthetic achieved throughout the accommodation deck is supremely elegant.



A MOST LUXURIOUS

Full-beam master suite

The Riviera 78 Motor Yacht has taken the concept of a full-beam master stateroom to a new level of luxury. A penthouse style retreat with large walk-in wardrobe and spacious ensuite bathroom. Pamper yourselves on the adjustable hi-low electric king bed with feature headboard. And you'll feel right at home with twin bedside tables and a full-length mirror behind the private entry door.

Large tinted hull windows bathe the suite in natural light and invite a cool sea breeze through opening portholes. There's a handcrafted timber drawer unit to starboard that doubles as a writing bureau or mirror-lined makeup table. And a supremely comfortable lounge to port adjoining a second timber drawer unit.

Premium carpet with underlay, reverse cycle air conditioning, electric blinds, a safe for valuables and a high-end home theatre system complete this luxurious suite.

MASTER ENSUITE

Practical, elegant design is evident throughout this beautiful air-conditioned bathroom. A teak shower seat and frameless glass door, his and her basins, heated towel rails, soft LED lighting, and a separate toilet room provide all the comforts of home and more. Enjoy natural light through the tinted hull window and open the porthole at anchor for fresh sea air.







FORWARD VIP

With private ensuite

VIP guests deserve the very best and that's what the forward stateroom delivers with private entry, private ensuite, large walk-around bed and natural light from tinted hull windows. The adjoining VIP ensuite will also delight. Luxury appointments include solid surface benchtops, heated towel rails, full-sized shower with teak seat and frameless glass door - even a tinted hull window with opening porthole.

TWO STATEROOMS IN ONE

The portside guest stateroom can be two single beds or one double at the press of a button. Flexible and practical, the inboard single berth slides smoothly across to form a very comfortable double. There's ample storage, entertainment centre, hanging locker and hull window with opening porthole. This stateroom shares a combination two-way entry ensuite/day head and guests will enjoy the luxury of a full-sized shower and designer vanity.

HOME FOR TWO MORE

The starboard guest stateroom has two adult sized Pullman beds overlapping at 90 degrees. Guests enjoy reverse cycle air conditioning, cedar lined hanging locker, ample storage, private entry door and the luxury of a tinted hull window with opening port hole. Guests share the ensuite of the third stateroom via the day head entry with privacy lock. There is also a linen cupboard under the top berth in the stateroom that opens to the companionway.

CREW CABIN,

dedicated laundry; or utility room.

A slide-out door next to the watersports equipment garage provides access via the engine room to the versatile crew cabin or utility space. This space can also be accessed via the stairs leading down from the entrance to the saloon.

If you would prefer to use this space to accommodate crew, the aft crew cabin option features a standard of appointments you expect from Riviera; private aft access, air conditioning, single berth bed or the option of double bunks, hanging locker, storage, wet head shower and vanity, microwave and small drawer fridge.

Another popular option for those with large families planning an extended voyage is to use this space as a dedicated laundry with a separate washing machine and dryer and bench space for sorting and folding. The utility room can be made to suit each owners' particular needs.



LARGE WATERSPORTS GARAGE

The 78 Motor Yacht's garage is a very practical area for all the family's fishing gear, SUPs, kayaks, water scooter and dive gear. Hose it all down with fresh water on the self-draining floor to a dedicated bilge pump and stow ready for tomorrow's adventure.

The large garage door opens wide with a fresh water mixer shower in the boot lid to wash off the salt and sand. Plus, there's an air compressor outlet to inflate the tender and other watersport toys as well as dedicated storage for scuba tanks and this space may also be customised to owners' requirements.





RIVIERA 78 MOTOR YACHT - ENCLOSED



HARDTOP
Shown with optional davit and foredeck table



FLYBRIDGE DECK
Shown with standard foredeck seating and tables



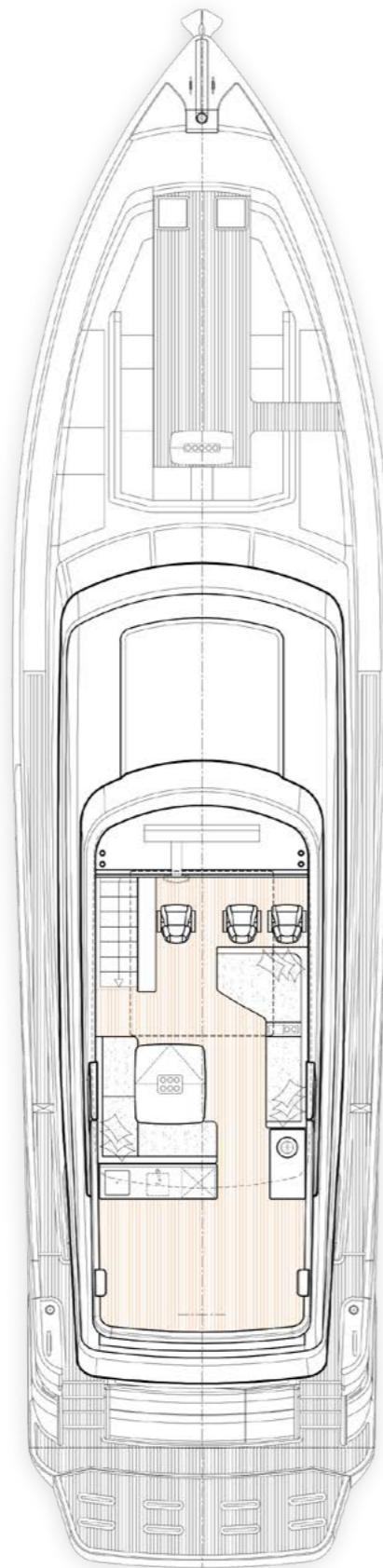
SALOON DECK
Shown with optional foredeck seating and table



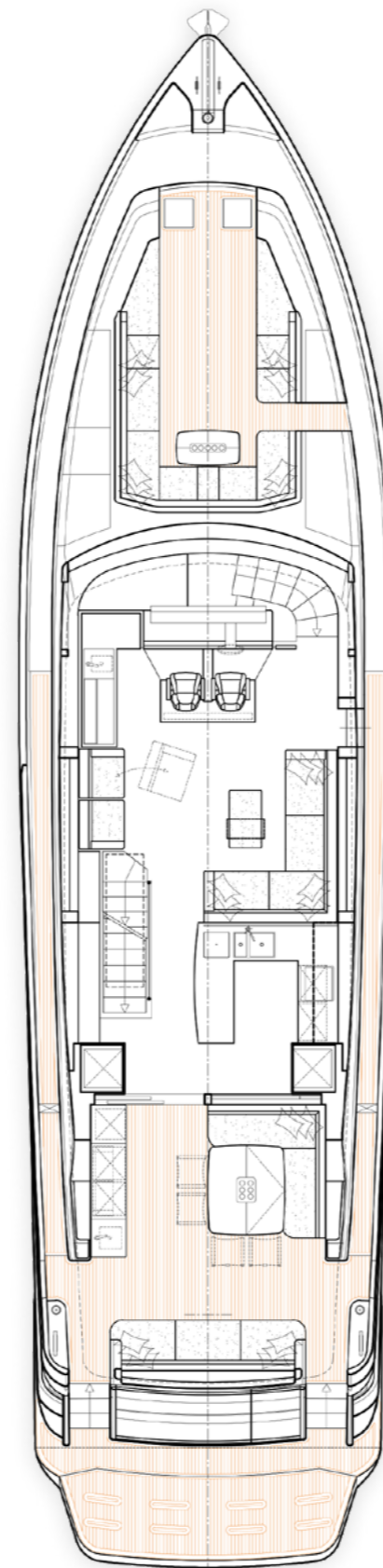
ACCOMMODATION DECK
Shown with optional crew cabin



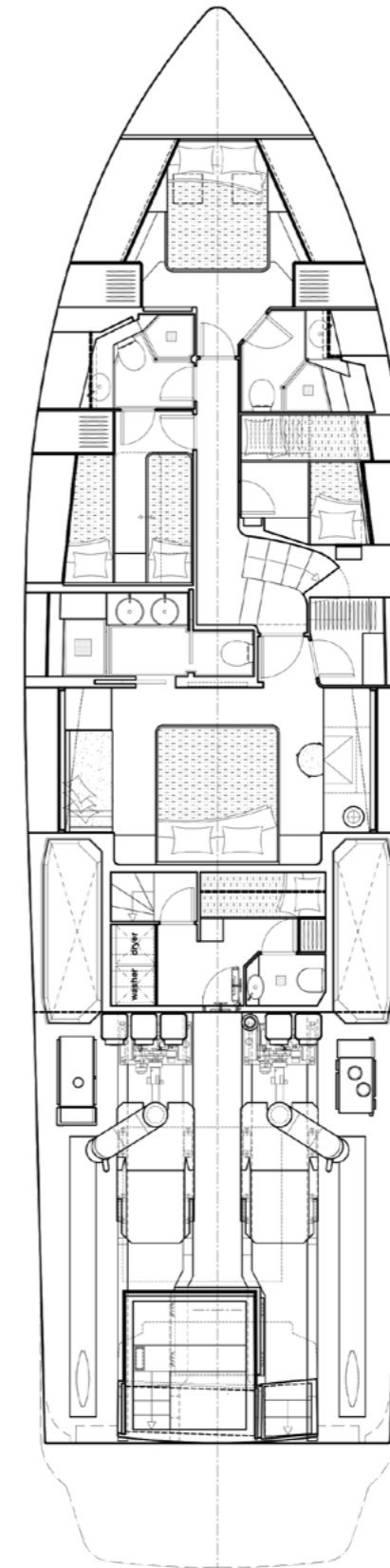
RIVIERA 78 MOTOR YACHT - OPEN



FLYBRIDGE DECK



SALOON DECK
Shown with standard foredeck seating and table



ACCOMMODATION DECK
Shown with optional crew cabin

RIVIERA 78 MOTOR YACHT

PELIMINARY SPECIFICATIONS

| | | | | | |
|---|-----------|--------------|------------------------------|------------|--------------|
| Length Overall <small>(inc. swimplatform and bow sprit)</small> | 24.58 m | 80' 8" | Water Capacity* | 800 L | 211 US gal |
| Hull Length (Lh to ISO8666)* | 22.11 m | 72' 6" | Holding Tank Capacity* | 651 L | 172 US gal |
| Beam <small>(inc. gunwale)</small> | 6.00 m | 19' 8" | Sleeping Capacity | 8 & 1 crew | |
| Maximum Draft <small>(inc. props)</small> | 1.90 m | 6' 3" | Standard Engine (2x) MAN V12 | 1,140kW | 1,550hp each |
| Dry Weight <small>(approx, not inc. options)*</small> | 56,300 kg | 124,120 lbs | Optional Engine (2x) MAN V12 | 1,324kW | 1,800hp each |
| Fuel Capacity* (3 tanks) | 10,200 L | 2,695 US gal | Optional Engine (2x) MAN V12 | 1,471kW | 2,000hp each |

* Specifications may vary on a regional basis

SPECIFICATION CLARIFICATION

* Length of the hull (Lh) to ISO8666: Includes all structural and integral parts (ie. the moulded length of the hull). It excludes parts that can be removed in a non-destructive manner without affecting the structural integrity of the craft, (eg. pulpits, outdrives, driving platforms, rubbing strakes).

** Dry weight represents the estimated minimum weight of a yacht with standard engines and options, no fuel or water on board, no equipment or provisions and no personnel. The stated dry weight may be exceeded.

*** Denotes net tank capacity. For useable capacity do not rely on more than 90% of tank capacity. Actual capacity will vary according to yacht trim and sea state. Speeds are subject to normal weather conditions, fuel and/or water levels, passengers and equipment loads.

OUR CARE FOR YOUR INFORMATION

Due to the constant refinement of specifications and design by Riviera Australia, the information in this document may change without notice. Specifications may vary with time and by region. Some images or illustrations in this brochure may include options or custom details. Please note that as safety equipment specifications or standards vary by country, this aspect of your purchase will need to be completed by yourself and or your Riviera representative. Please refer to your Riviera representative for specific warranty cover and the latest detailed list of inclusions and options prior to purchase..

