

64 ft 2024 Riviera 645 SUV

Call

Seattle, Washington, United States



Boat Details

Make:	Riviera	Class:	Motor Yacht	Fuel Type:	Diesel
Model:	645 SUV	Hull Material:	Fiberglass	Max Draft:	5 ft 4 in
Year:	2024	Drive Type:	Direct Drive		
Length:	64 ft	Beam:	19 ft 1 in		
Price:	Call	Boat Location:	Seattle, Washington, United States		
Condition:	New	Heads:	4		

E P Y | Emerald Pacific Yachts

1419 NE Boat St., Seattle, Washington, United States

Tel: 206.587.0660

info@epyachts.com

www.emeraldpacificyachts.com

Description

WE HAVE HULL #36 IN INVENTORY AND AVAILABLE FOR IMMEDIATE DELIVERY. On display in our covered moorage showroom space. Seattle area moorage available. Ask us for details!

The Riviera design group in collaboration with 4D designs have created this unique motor yacht. And everything about Riviera's 645 SUV is impressive. The 645 has the largest water sports and fishing cockpit of all the models in our SUV Collection. When the alfresco deck opens up to our most spacious SUV saloon and galley, the single-level living plan is spectacular. And of course the 645 offers our largest SUV accommodation deck with a full-beam master stateroom and three guest staterooms.

The three-seat helm station is expansive and the stand-up engine room is equally generous. And when it comes to performance, the twin shaft drive MAN turbo diesel engine options are the most powerful offerING in our SUV range. MAN engines coupled with hydraulic bow and stern thrusters integrated into the EJS system with (2) joysticks makes this Riviera 645 effortless to dock and maneuver.

Information & Features

MAN DIESEL Upgraded V12 with Joystick (Engine 1)

Type:	Inboard	Power:	1550 hp
Fuel Type:	Diesel		
Drive Type:	Direct Drive		

MAN DIESEL Upgraded V12 with Joystick (Engine 2)

Type:	Inboard	Power:	1550 hp
Fuel Type:	Diesel		
Drive Type:	Direct Drive		

Dimensions

LOA:	69 ft 8 in	Max Draft:	5 ft 4 in
Beam:	19 ft 1 in		
Max Bridge Clearance:	19 ft 1 in		

Weights

Dry Weight:	88,119 lb
-------------	------------------

Tanks

Fuel:	1,717 gal
Fresh Water:	198 gal
Holding:	132 gal

Accommodations

Heads:	4
--------	----------

Other

Hull Shape:	Semi Displacement
-------------	--------------------------

Manufacturer Provided Description

The Riviera design group in collaboration with 4D designs have created this unique motor yacht. And everything about Riviera's 645 SUV is impressive. The 645 has the largest water sports and fishing cockpit of all the models in our SUV Collection. When the alfresco deck opens up to our most spacious SUV saloon and galley, the single-level living plan is spectacular. And of course the 645 offers our largest SUV accommodation deck with a full-beam master stateroom. Choose three or four staterooms with three bathrooms plus an optional lower lounge and crew cabin, utility room or additional accommodation.

The three-seat helm station is expansive and the stand-up engine room is equally generous. And when it comes to performance, the twin shaft drive MAN turbo diesel engine options are the most powerful on offer in our SUV range.

Emerald Pacific Edition Options

Upgraded 1550 hp V12 MAN diesels, quick shift gearboxes, electronic controls, hydraulic bow and stern thrusters integrated into the EJS system with (2) joysticks.

Extra cockpit joystick (port and starboard)(total of 3 onboard)

Active ride control added to the trim system

Seakeeper 18 Gyro stabilizer

Second generator - 13.5kW Onan

Hi-Lo hydraulic swim platform with (4) removable stainless steel U-shaped rails

Complete Garmin Electronics package

Dual Mount for open array antenna and FLIR camera

KVH Satellite TV system

(4) underwater lights

FLIR camera

Blue Water Legend 1850 watermaker

Painted hardtop - - RIVIERA PLANTINUM

AND MUCH MORE!!!!

Disclaimer

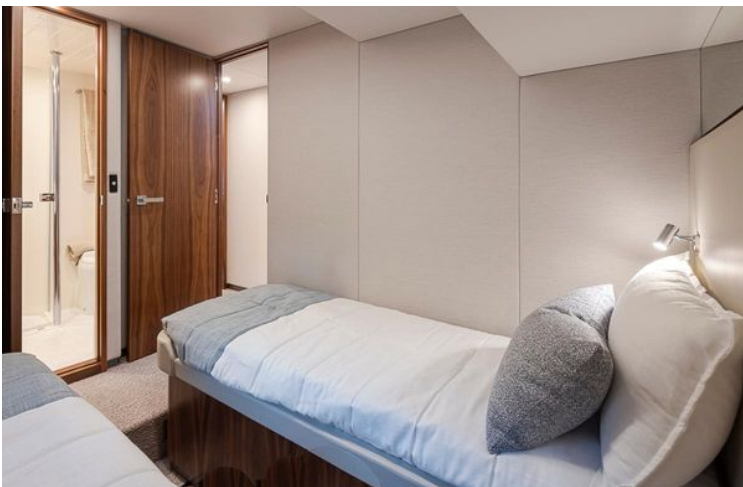
The Company offers the details of this vessel in good faith but cannot guarantee or warrant the accuracy of this information nor warrant the condition of the vessel. A buyer should instruct his agents, or his surveyors, to investigate such details as the buyer desires validated. This vessel is offered subject to prior sale, price change, or withdrawal without notice.

Emerald Pacific Yachts has become one of the premier leaders of the West Coast Yachting Industry since its founding in 1997. Renowned for the sale of both pre-owned and new construction as the Official West Coast distributor and dealer for Riviera Yachts. The company has an unrivaled reputation with a highly experienced and committed sales team, providing superior customer service to meet all of our clients' needs.

















Classic Edition layout shown with foredeck seating and optional awning



Classic Edition shown with foredeck seating, optional starboard Club Lounge and bait tank in lieu of transom lounge



Newport Edition shown with optional foredeck seating and teak



Classic 4 cabin layout with utility/laundry room



Optional Lower lounge with single crew cabin/laundry

